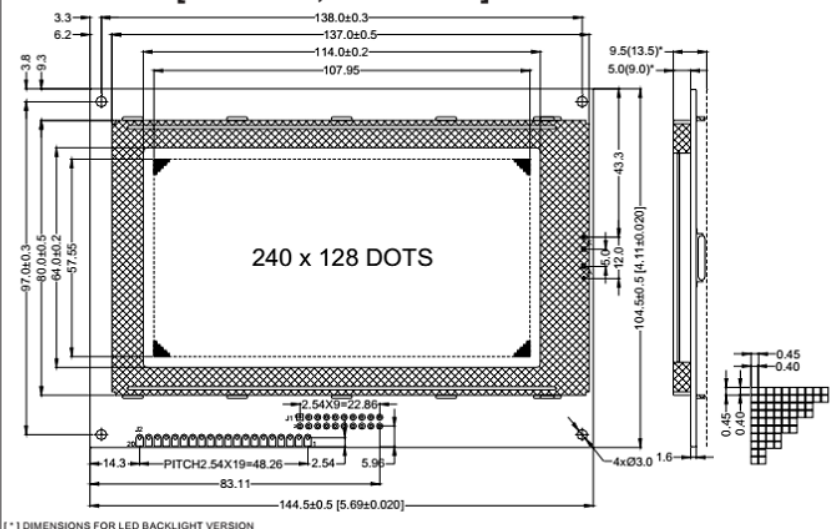


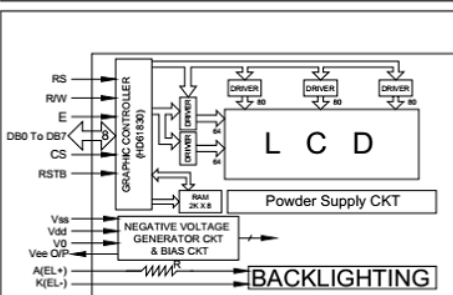
## LG241281B [240 x 128, 1/128 MUX]

DIMENSION IN MM



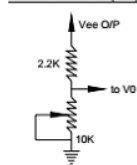
[\*] DIMENSIONS FOR LED BACKLIGHT VERSION

### BLOCK DIAGRAM



CONTROLLER: HD61830B  
COM. IC: T6A40 OR EQUIVALENT  
SEG. IC: T6A39 OR EQUIVALENT

### CKT FOR VLCD (VO)



### PIN DETAILS

PIN No.	J1	J2	DESCRIPTION
1	1		Gnd
2	2		Vcc
3	3		Vo (Vlcd)
4	4		RS
5	5		R/W
6	6		E
7	7		DB0
8	8		DB1
9	9		DB2
10	10		DB3
11	11		DB4
12	12		DB5
13	13		DB6
14	14		DB7
15	15		CS
16	16		RSTB
17	17		Vee O/P
18	18		NC
19	19		A(LED)
20	20		K(LED)

### TABULATED DATA

MODEL	DISPLAY FORMAT DOT x DOT	DRIVING DUTY	DOT SIZE W x H	DOT PITCH W x H	VIEWING AREA W x H	PCB SIZE W x H
LG241281B	240 x 128	1/128	0.40 x 0.40	0.45 x 0.45	114.0 x 64.0	144.5 x 104.5

LAMPEx reserves all rights. Specification might alter without prior notice.

**CAUTION: STATIC SENSITIVE DEVICES**

### ABSOLUTE MAXIMUM RATING

ITEM	SYMBOL	TEST CONDITION	STANDARD VALUES			UNITS
			MIN.	TYP.	MAX.	
Power Supply for Logic	V <sub>dd</sub> -V <sub>ss</sub>	T <sub>a</sub> = 25°C	0	-	6.7	V
Input Voltage	V	T <sub>a</sub> = 25°C	0	-	V <sub>dd</sub>	V
Operating Voltage for LCD	V <sub>dd</sub> -V <sub>ee</sub>	T <sub>a</sub> = 25°C	0	-	- 12	V
Operating Temperature	T <sub>op</sub>	-	-15	-	+ 65	°C
Storage Temperature	T <sub>st</sub>	-	- 20	-	+ 70	°C

### ELECTRICAL DATA (T<sub>a</sub> = 25°C, V<sub>dd</sub> = +5V ± 0.25V)

ITEM	SYMBOL	TEST CONDITION	STANDARD VALUES			UNITS
			MIN.	TYP.	MAX.	
Input High Voltage	V <sub>ih</sub>	-	2.4	-	V <sub>dd</sub>	V
Input Low Voltage	V <sub>il</sub>	-	V <sub>ss</sub>	-	0.7	V
Output High Voltage	V <sub>oh</sub>	I <sub>oh</sub> = 0.6mA	V <sub>dd</sub> -0.4	-	V <sub>dd</sub>	V
Output Low Voltage	V <sub>ol</sub>	I <sub>ol</sub> = 1.6mA	-	-	0.4	V
Supply Current	I <sub>dd</sub>	V <sub>dd</sub> = 5.0V	-	14.0	25.0	mA
Operating Voltage for LCD	V <sub>dd</sub> -V <sub>out</sub>	T <sub>a</sub> = 0°C	-5.2	-12.2	-16.0	V
		T <sub>a</sub> = 25°C	-4.8	-10.2	-14.2	V
LED Backlight Current	I <sub>LED</sub>	V <sub>dd</sub> = 5.0V	150	180	240	mA

### NOTE

#### RAM OPTION:

RAM SIZE      DISPLAY MODE  
32K            : Character & Graphic

#### Other Details:

For details relating to the Initialization, Instruction Set, Timing Diagram, Please refer to the LCD Controller (HD61830B) Datasheet.

#### Ordering Details:

Different Grades & Options are available in this LCD Module. Please contact us at the time of ordering for the ordering Codes.